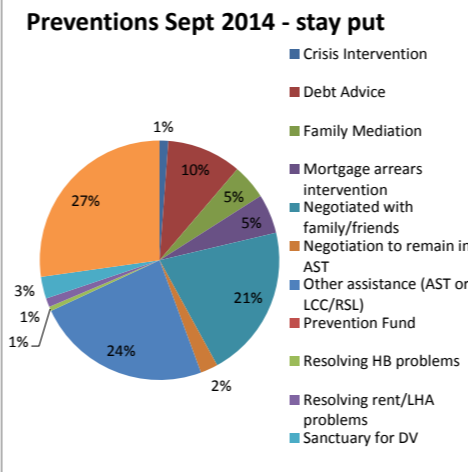
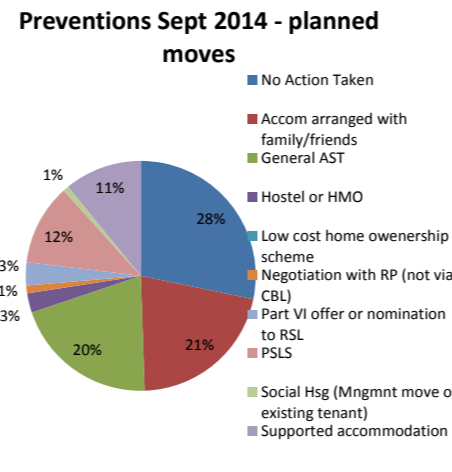
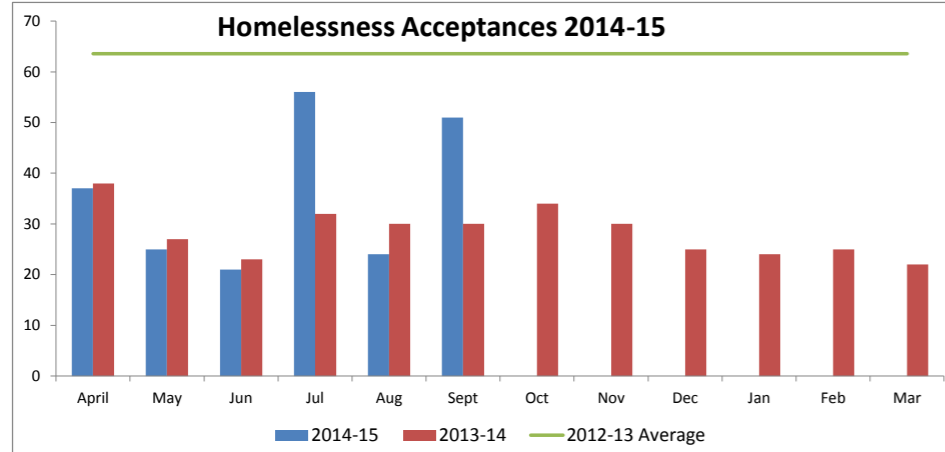
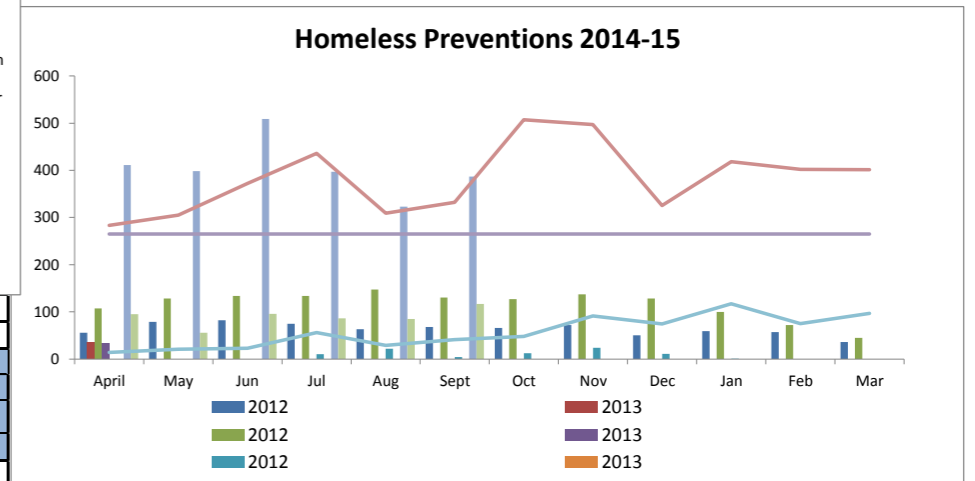


Housing Support - Performance Framework September 2014

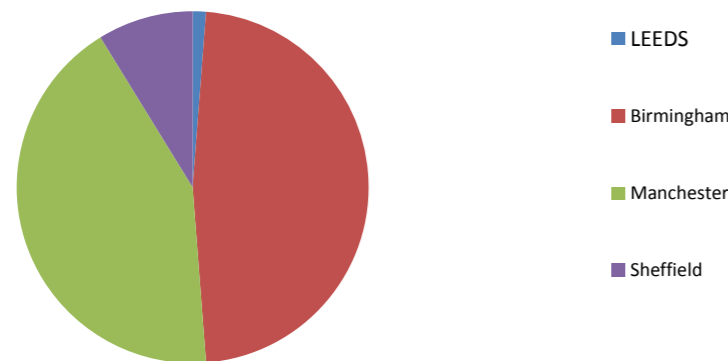
Half the core cities are reporting increases of up to 21% in households owed a main homeless duty (P1E, 2013 Qtr4 – 2014 Qtr2). In September, homeless acceptances has increased and is higher than previous months (excluding July) yet remains lower than 2012/13's monthly average of 64



At 387, September's preventions exceed 2012/13's monthly average of 266. Following the service being transferred in-house, preventions through Young Person's Intervention have increased from an average of 19 in 13/14 to 47.

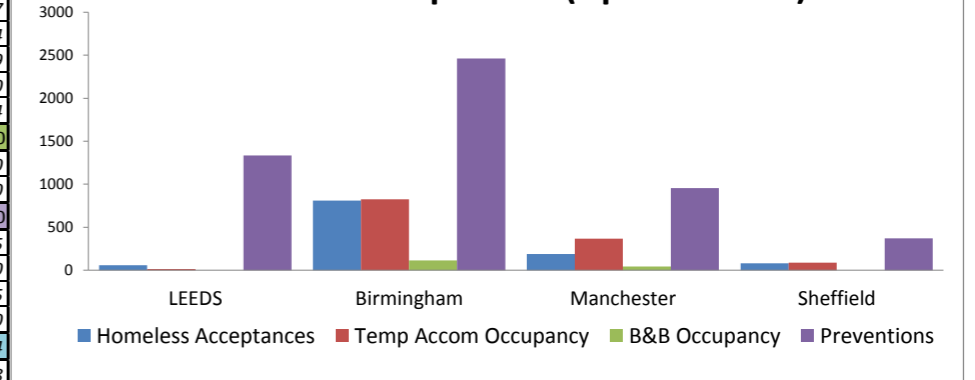


TA per 1,000 households (April-June 2014)

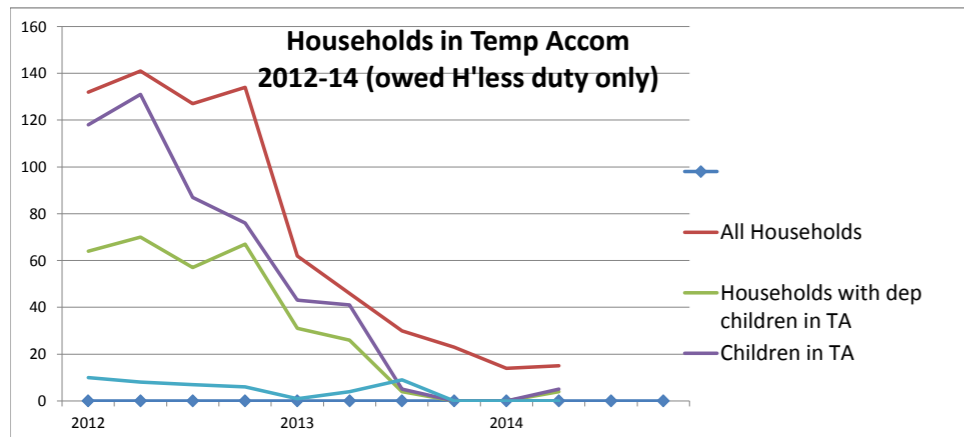


	2013-14		2014-15				
	Mar	Apr	May	June	July	Aug	Sept
Total Temp Accom Occupancy	157	149	150	131	147	137	134
Total Households with dependents	76	71	71	65	72	70	65
Total Number Children	97	106	110	106	147	143	134
Total 16/17 Year olds:	5	4	11	10	11	5	5
Of which:							
Self-Contained (Total)	91	86	81	72	75	70	70
of which Families in PSL	0	0	0	0	0	0	0
of which Families in HA	57	52	52	45	50	51	47
of which other H/Holds in PSL	1	1	1	1	2	2	4
of which other H/Holds in HA	33	33	28	26	23	17	19
Number children in PSL	0	0	0	0	0	0	0
Number children in HA	74	75	78	77	101	101	94
B&B (Total)	0	0	0	0	0	0	0
of which Families	0	0	0	0	0	0	0
of which other H/Holds	0	0	0	0	0	0	0
Hostel (Total)	43	42	48	37	47	42	40
of which male	36	34	38	25	32	31	35
of which female	4	3	4	5	6	6	0
of which young people	3	5	6	7	9	5	5
of which Families	0	0	0	0	0	0	0
Refuge (Total)	23	21	21	22	25	25	24
of which Families	19	19	19	20	22	19	18
of which Single female	4	2	2	2	3	6	6
Number of children	23	31	32	29	46	42	40

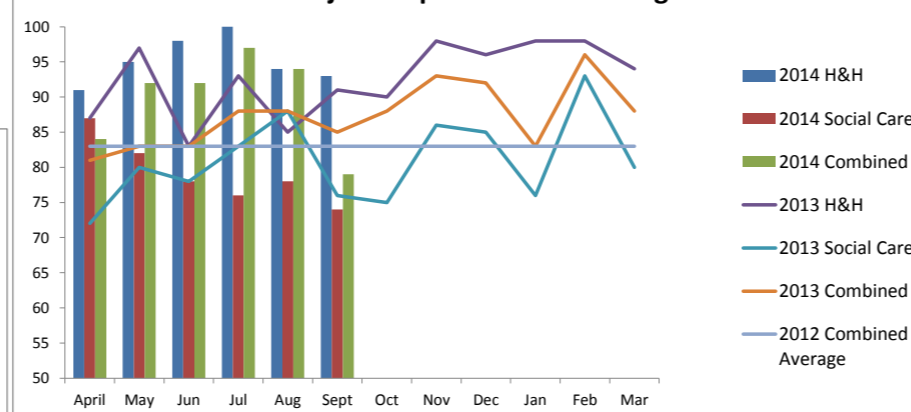
Core Cities Comparison (April-June 14)



Vacant units in self-contained properties are being used to accommodate looked after children aged 16 - 21 years old as part of joint working with Children's Services and Housing Options. Close working with Flagship is ensuring young people do not need to go into hostels and wherever possible more suitable accommodation is secured.



% Major Adaptations within Target



Health and Housing performance has improved significantly, moving from the 50th percentile in 2010/11 to the 90th currently, despite more demanding targets that include shorter timescales to complete works. The % cases not completed are often extensions with in-built delays

During September, there were a total of 3 new encampment, which were in the East, South and North of Leeds. There have been 0 encampments on privately owned land in July, August and September 2014/15.

New Unauthorised Encampments & Tolerated Sites 2014-15

